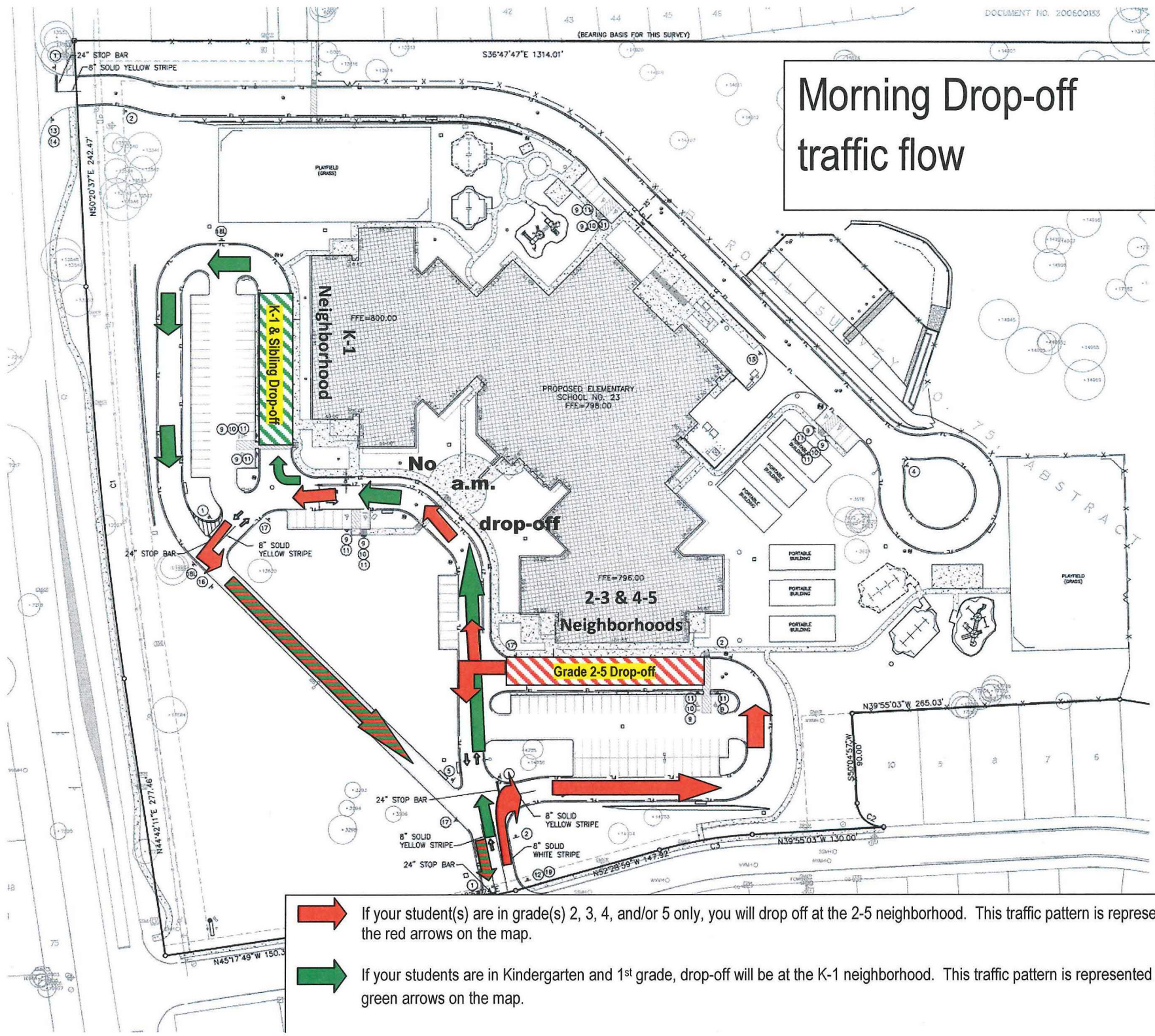




(BEARING BASIS FOR THIS SURVEY)

Morning Drop-off traffic flow



-  If your student(s) are in grade(s) 2, 3, 4, and/or 5 only, you will drop off at the 2-5 neighborhood. This traffic pattern is represented by the red arrows on the map.
-  If your students are in Kindergarten and 1st grade, drop-off will be at the K-1 neighborhood. This traffic pattern is represented by the green arrows on the map.